



MeacoCool MC Series Portable Air Conditioner (Cooling and Heating) Instruction Manual



MeacoCool MC Series 9000 BTU CH

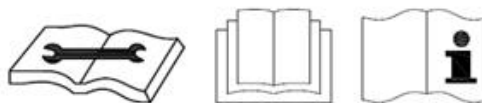
Please read this instruction manual before using the portable air conditioner and keep safe for future reference.

Thank you for choosing Meaco, we really appreciate it.

SAFTEY INFORMATION

This portable air conditioner must not be used in rooms under the following conditions:

- *Potentially explosive atmosphere*
- *Aggressive atmospheres*
- *Featuring a high concentration of solvents*
- *An extremely high ratio of dust*



Keep Children Away: Do not allow children to play with or around this unit, which could result in injury. Be sure the unit is inaccessible to children when not attended. This appliance is not intended for use by person (including children) with reduced physical, sensory or mental capabilities, or lack of experience and knowledge, unless they have been given supervision or instruction concerning use of the appliance by a person responsible for their safety.

Keep Unit Grounded: Always operate the unit with a grounded plug and a grounded electrical outlet. A grounded plug is an essential safety feature that helps reduce the risk of shock or fire.

Protect Power Cord from Damage: Never operate a unit with a damaged power cord, as this may lead to electrical or fire hazards. If the power supply cord is damaged, it must be replaced by a cord of the same type and amperage rating.

Extension Cords: Extension cords must be grounded and able to deliver the appropriate voltages to the unit.

Handle with Care: Do not drop, throw or crash the air conditioner. Rough treatment can damage the components or wiring and create a hazardous condition.

Run on Stable Surface: Always operate the unit on a stable, level surface, for example the floor or a strong counter, so that the portable air conditioner cannot fall and cause injury.

Keep Out of Water: Never operate the unit in pooled or standing water, as this may create a risk of injury from electrical shock. Do not store or operate outdoors. If electrical wiring or components become wet, thoroughly dry them before using the unit. If in doubt do not use the portable air conditioner and consult a qualified electrician or a Meaco approved engineer.

Keep Air Intakes Clear: Do not clog or block the air intakes by placing the portable air conditioner too close to curtains, walls or anything that will restrict the air inlet. This may cause the unit to overheat and result in a fire or electrical hazard.

Keep Electrical Components Dry: Never allow water inside the portable air conditioner's electrical components. If these areas become wet for any reason, thoroughly dry them before using the portable air conditioner. If in doubt, do not use the portable air conditioner and consult a qualified electrician or a Meaco approved engineer.

The operator must make the operating instruction available for the user and make sure that the user does understand the manual.



The MeacoCool MC Series 9000 BTU CH uses the new R290 refrigerant gas to comply with European Environmental Directives. R290 is kinder to the environment and is part of attempts to reduce global warming as it has a low greenhouse effect (GWP).

When using the MeacoCool MC Series 9000 BTU CH you must take into account the following:

- This portable air conditioner uses about 200 grams of R290 refrigerant in the 9000 BTU CH model, which is flammable. Therefore, it is part of a sealed system and must only be serviced by a trained Meaco engineer.
- Do not use or store this portable air conditioner in a room smaller than 4m² to prevent a fire or explosion hazard if there is a leak of refrigerant and the gas comes into contact with an ignition source.
- Do not use in a room with any continuous sources of ignition, for example open flames, gas fires or hobs, cigarettes or any other sources of ignition.
- If the portable air conditioner is installed, operated or stored in a non-ventilated area, then the room must be designed to prevent the accumulation of refrigerant leaks resulting in a risk of fire or explosion due to ignition of the refrigerant caused by electric heaters, cookers, or other sources of ignition.
- R290 refrigerant gas is odourless.
- Do not puncture either during the units working life or after. At the end of life dispose of following local recycling regulations.
- If there is any damage to the portable air conditioner then do not use it and contact Meaco or your retailer.
- As with all portable air conditioner, always keep upright and leave the portable air conditioner standing upright for eight hours before using it upon receipt.



Failure to comply with these instructions could result in fire, damage to property, serious injury or potentially death.

Individuals who operate or work on the refrigerant circuit must have the appropriate certification issued by a national accredited organisation that ensures competence in handling flammable refrigerants according to a specific evaluation recognised by national associations in the industry and compliant with the latest R290 guidance.

Servicing should only be carried out by a Meaco approved engineer using original Meaco parts to prevent damage to the unit and potential injury to the engineer.

WIRING INSTRUCTIONS


Should it be necessary to change the plug, please note the wires in the mains lead are coloured in accordance with the following code:

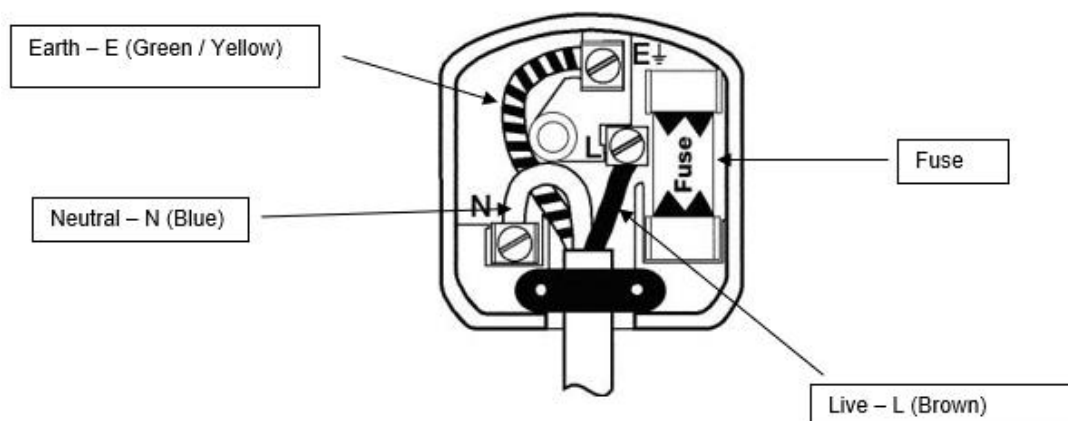
BLUE – NEUTRAL
 BROWN – LIVE
 GREEN AND YELLOW – EARTH

As the colours of the wires in the mains lead of this appliance may not correspond with the coloured markings identifying the terminals in your plug, proceed as follows:

1. The **BLUE** wire is the NEUTRAL and must be connected to the terminal which is marked with the letter N or coloured **BLACK**.
2. The **BROWN** wire is the LIVE and must be connected to the terminal which is marked with the letter L or coloured **RED**.
3. The **GREEN/YELLOW** is the EARTH and must be connected to the terminal which is marked with the letter E or coloured **GREEN** or **GREEN/YELLOW**.
4. Always ensure that the cord grip is positioned and fastened correctly.
5. Only ever use the same fuse as fitted in the original product, if in doubt please contact Meaco first, or a qualified electrician.

Example wiring for a Standard British Plug:

Please note: The Earth Terminal is marked with the letter E or Earth Symbol .



GENERAL ADVICE

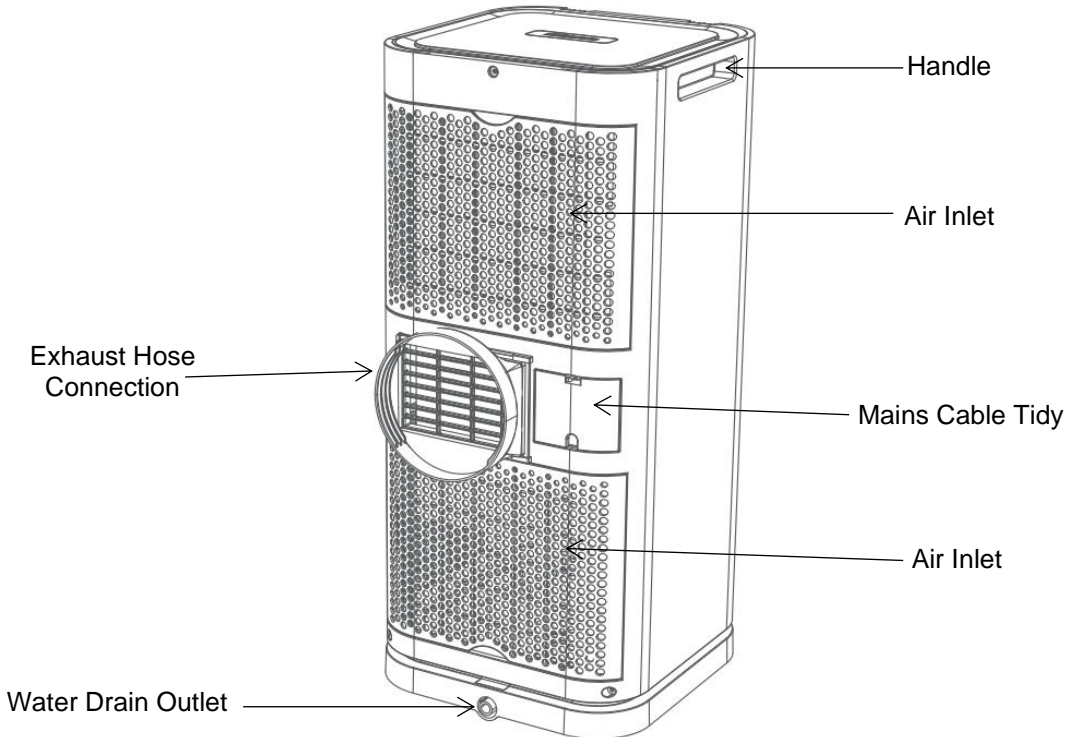
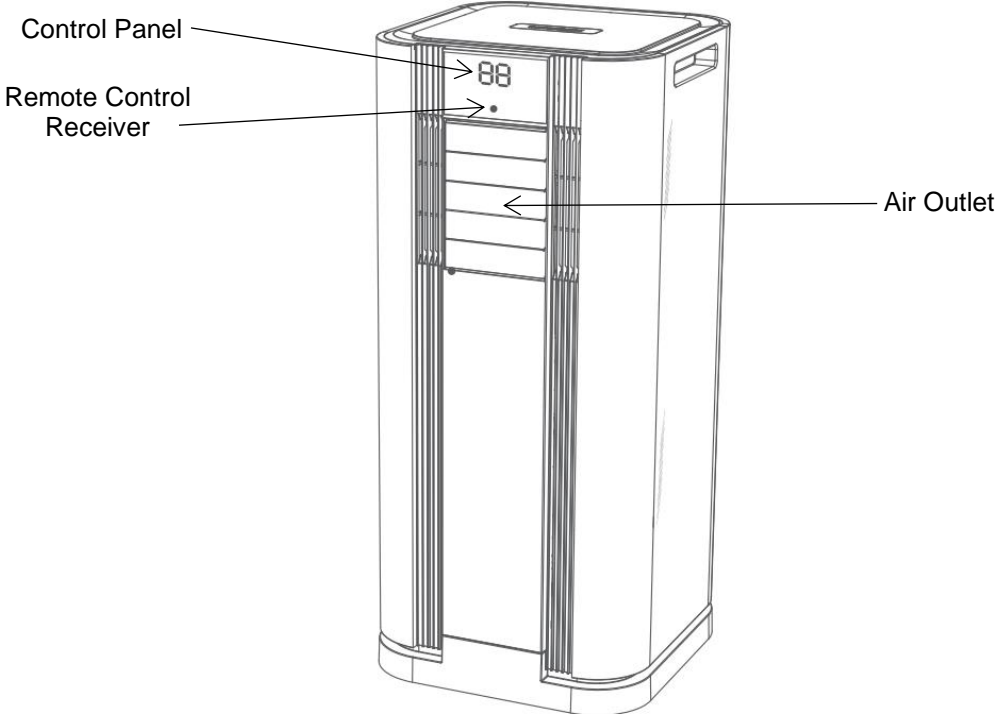
- Before putting your portable air conditioner into operation for the first time, the instruction manual should be studied carefully.
- After receiving the portable air conditioner, you should check the unit for any transport damage. In case of damage, you should inform the sender immediately.
- It is very important to allow the portable air conditioner to stand upright for eight hours before turning the unit on.
- Keep the packaging for the portable air conditioner in a safe place in order to be able to despatch the unit safely if it requires a service. In order to save space, you can simply cut through the adhesive tape using a knife and fold the cardboard box.

PORTABLE AIR CONDITIONER PRINCIPLES

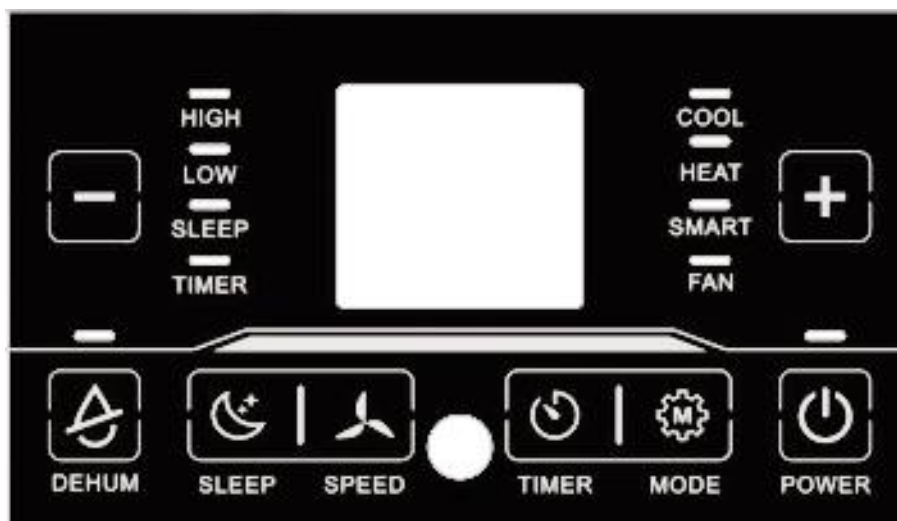
Cooling works best in a well-sealed room with as little heat gain from sunlight as possible. We advise keeping all doors, windows and curtains/blinds closed before using the portable air conditioner in order to pre-cool the room. This is especially useful in bedrooms where pre-cooling the room before going to bed is more sensible than trying to sleep with an air conditioner turned on in the room.

PRODUCT IDENTIFICATION

Allow 50cm clearance around all sides of the portable air conditioner for optimum air flow.



CONTROL PANEL



POWER BUTTON

When first plugged in the portable air conditioner will enter standby mode and display '- -'. Press the Power Button to switch the unit on – the unit will enter the default Smart Mode and the compressor will not start for three minutes. Press the Power Button again to turn the unit off, the fan will stop ten seconds after the Power Button has been pressed.

MODE BUTTON

Press the Mode Button to scroll through the six available modes: Cool, Heat, Smart, Fan, Dehum and Sleep.

THE SIX MODES

1. COOLING MODE: Use to cool the temperature of a room

When the room temperature is higher than your target temperature, the fan and compressor will run, and the air is cooled. When the room temperature is below your target temperature, the fan will continue to run but the compressor is turned off.

Cooling Mode does not work below 15°C or above 43°C.

2. HEATING MODE: Use to heat the temperature of a room

When the room temperature is lower than your target temperature, the fan and the compressor will run and the air is heated. When the room temperature is above your target temperature, the fan will run but the compressor is turned off.

3. SMART MODE: Use to automatically control the temperature

Below 22°C the unit will run in Heating Mode. Above 24°C the unit will run in Cooling Mode. Between 22°C and 24°C the unit will run in Fan Mode.

4. FAN MODE: Use to circulate the air in the room at a comfortable temperature

There will be no heating or cooling, just the fan running.

5. DEHUM MODE: Use to reduce the humidity level.

The unit will run in Low Fan Speed and dry the air whilst the room temperature remains above 15°C. A hose needs to be connected to the unit in order to drain away the collected water.

6. SLEEP MODE: Use to reduce noise level of the unit.

The fan will run on Low Fan Speed to reduce the noise level. After every hour of operation, the target temperature will increase automatically for the first two hours.

TIMER BUTTON

When the portable air conditioner is in standby mode, use the Timer Button to set an interval between 1 and 12 hours after which the unit will turn ON.

When the portable air conditioner is switched on and running, use the Timer Button to set an interval between 1 and 12 hours after which the unit will turn OFF.

If you wish to turn the timer function off, select 0 hours.

FAN SPEED BUTTON

Use the Speed Button to select either Low or High Fan Speed. This function is disabled in Dehumidification and Sleep Mode.

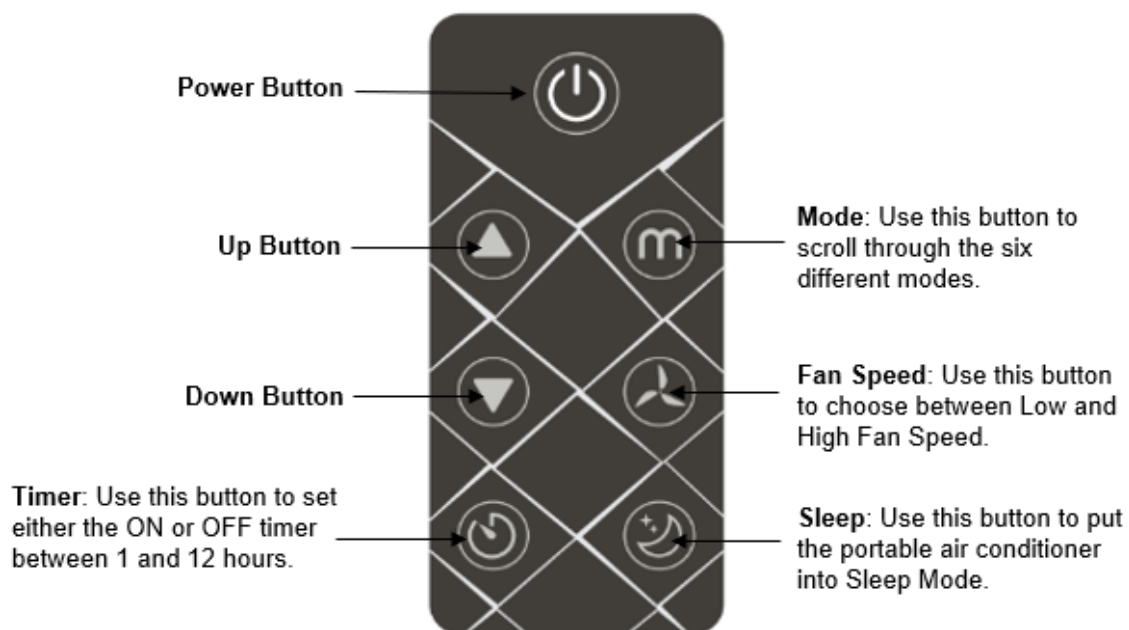
SLEEP BUTTON

When the portable air conditioner is being used in Cooling Mode or Heating Mode, Sleep Mode can be selected using the Sleep Button. If selected the fan will run on Low Fan Speed to reduce the noise level. After every hour of operation, the target temperature will increase automatically for the first two hours.

DEHUMIDIFICATION BUTTON

Use the Dehumidification Button to remove moisture from the air. The portable air conditioner will run in Low Fan Speed and dry the air whilst the room temperature remains above 15°C. A hose needs to be connected to the unit in order to drain away the collected water.

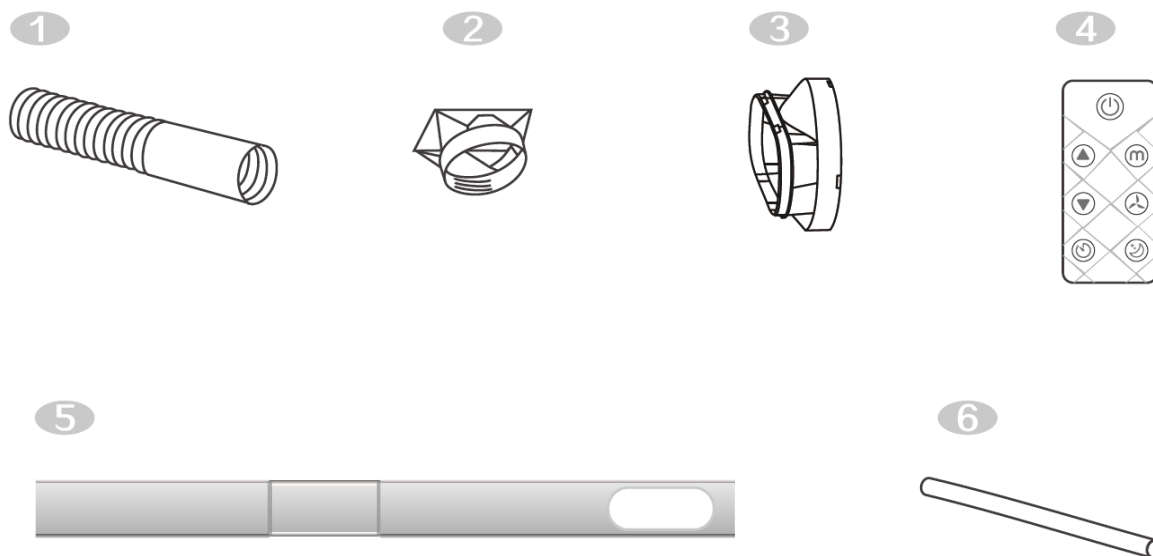
REMOTE CONTROL



Before use remove the battery's insulating piece as per below.

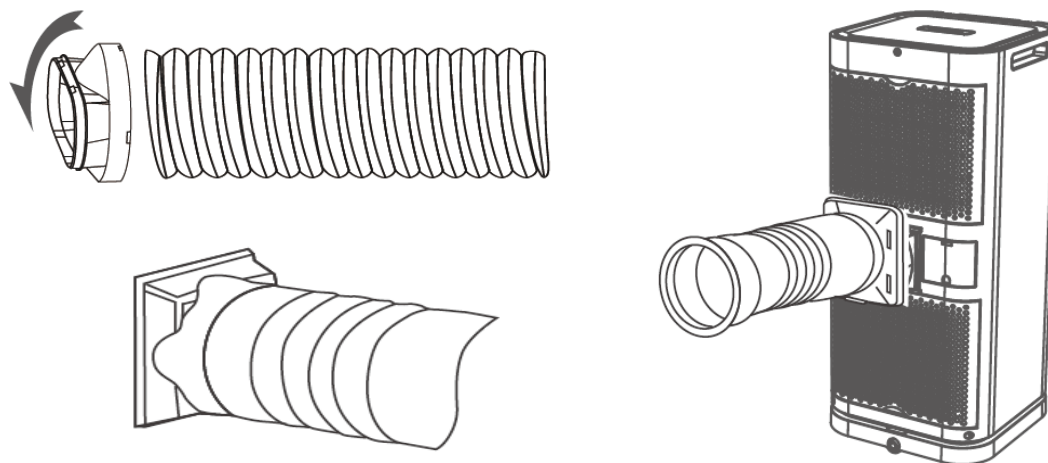


HOSE AND WINDOW BLANKING PLATE



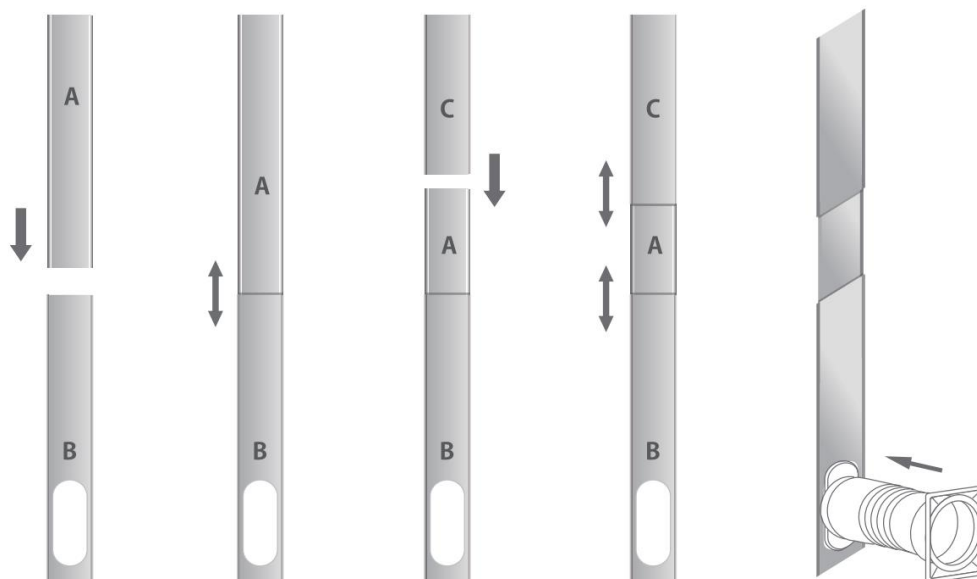
- | | | |
|-------------------|------------------------------|-----------------------------|
| 1. Exhaust Duct | 2. Exhaust Machine Connector | 3. Exhaust Window Connector |
| 4. Remote Control | 5. Window Blanking Plate | 6. Drainage Pipe |

HOW TO CONNECT THE HOSE TO THE PORTABLE AIR CONDITIONER

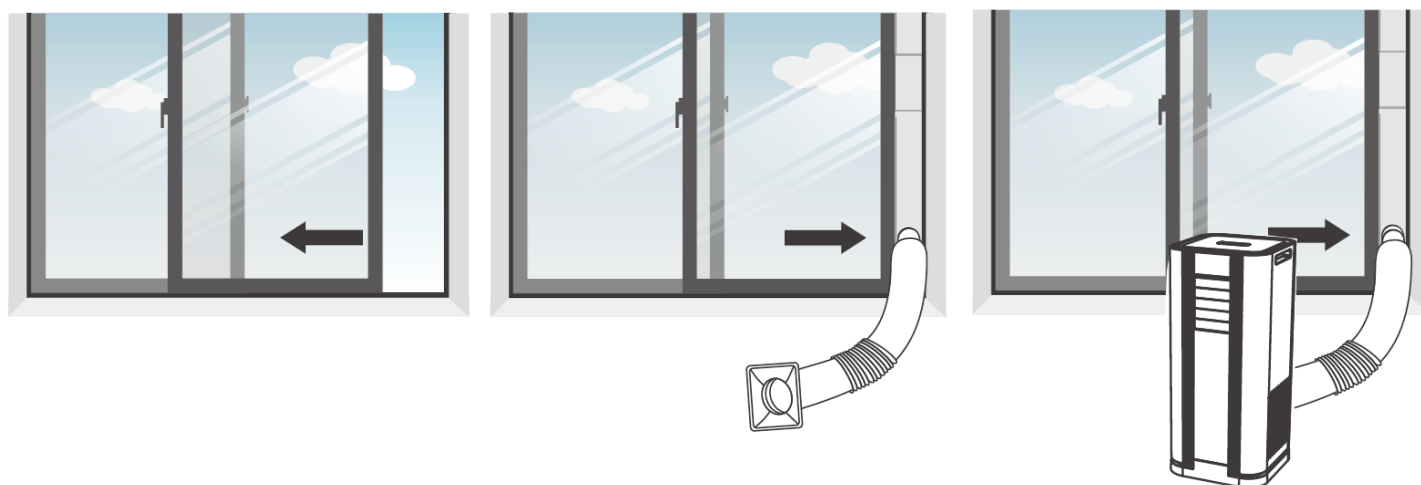


The exhaust duct connects onto the back of the air conditioner to remove the hot air outside, typically through a window. Use the window blanking plate to seal the rest of the window off in order to make cooling the room more efficient. Connect the duct as per above. The exhaust connector with the square end needs to be connected to the machine, and the exhaust connector with the round end needs to be placed outside a window.

HOW TO BUILD THE WINDOW BLANKING PLATE



1. Insert the A plate into the B plate.
2. After completing the assembly, adjust it according to the height of the window.
3. If the blanking plate is not long enough to close the window, insert the C plate to increase the height.
4. After completing the assembly of the blanking plate, adjust the A and C sections according to the height of the window until the window is completely closed.
5. Install the exhaust pipe via the exhaust window connector into the hole in section B.



The more well sealed the room is, and the less direct sunlight there is coming into the room, the more efficient the cooling will be, and the less energy will be used.

HOW TO DRAIN WATER FROM THE TANK

The drainage pipe is used to drain water away from the portable air conditioner when Ft (Full Tank) appears on the display, or when it is being used in Dehum Mode. Connect the drainage pipe to the bottom of the portable air conditioner and raise the portable air conditioner slightly allowing water to drain out of the tank via gravity. Make sure there are no kinks or blockages in the hose.

1. Switch off the portable air conditioner before draining any water.
2. Slightly tilt the portable air conditioner in a stable position.
3. Remove the plug from the water outlet opening (it is very important not to lose the plug).
4. Securely attach the drainage hose to the outlet.
5. Place the end of the hose over a drain or bucket and ensure that the water can flow freely out of the portable air conditioner.
6. Do not submerge the end of the hose into the water as this will create an air lock.
7. Once the water has been drained, remove the hose and reinsert the plug.



SPECIFICATIONS

Cooling Capacity	9000 BTU
Heating Capacity	8000 BTU
Maximum Air Flow	330m ³ /hour
Power Supply	220 - 240V / 50Hz
Power Consumption: Cooling (watts)	950
Power Consumption: Heating (watts)	800
Refrigerant	R290 / 200g
Maximum Input Current/Power	5.0A / 1080W
Noise Level	53dB in low fan speed
Approximate Room Size m²	16-26
Timer	On and Off Timer 0-24 hours
Duct Length (m)	1.8m
Portable Air Conditioner Dimensions (mm)	320 x 320 x 740
Box Dimensions (mm)	416 x 382 x 940
Nett Weight (kgs)	26
Gross Weight (kgs)	29

CLEANING AND STORAGE

Always turn the portable air conditioner off and unplug it from the wall socket before cleaning.

- The filter must be cleaned a minimum of once a week to ensure dust/dirt does not enter the inside of the machine.
- The filter can be vacuumed using the end of a Hoover or washed in warm soapy water. If you wash the filter using water, make sure it is completely dry before reinstalling.
- Before moving or storing the portable air conditioner, drain any collected water away using the drainage hose provided (see page 12 for further instructions).
- Before storage run the portable air conditioner in Fan Only Mode for 4 to 6 hours to dry the internal coils of any residual water.
- When storing the portable air conditioner use the cable compartment to store the mains cable. Clean the filter and then store the unit in its plastic bag or original box to protect the fan from dust.
- Remember the portable air conditioner can also be used as a dehumidifier (above 15°C) and a heater during the winter months if required.

TROUBLE SHOOTING

TROUBLE	CAUSE	SOLUTION
No power to the machine	There is no power to the unit.	Plug in the unit and check the power outlet.
	The ON/OFF button has not been pressed.	Press the ON/OFF button.
Power button does not work	Check the instructions above.	If it still does not work please contact Meaco.
Machine turned on but compressor does not work	The compressor does not turn on for the first three minutes of operation.	Wait three minutes.
Remote control does not work	The battery needs changing or the remote is out of range.	Replace the battery in the remote or stand closer to the machine.
Increased noise level	The filter is dirty.	Clean the filter (see page ?).
	The air inlet is blocked.	Make sure there is enough space around the unit and that the air inlet is not blocked by a wall, furniture or curtains.
	The unit is being used on uneven floor.	Place the unit on a level surface.
Too noisy to use in a bedroom	Pre-cool the room.	Run the unit for several hours before you go to bed with the curtains and door closed in order to pre-cool the room.
Fan speed does not change	The unit is in Sleep Mode or Dehum Mode.	Change operation mode if required (see page 8).
Cooling is not effective	Room size is too large.	Check whether the air coming out of the unit is cool and either let the unit run for longer or use it in a smaller room. Keep all doors and windows shut.

Cooling is not effective	Too much direct sunlight.	Block the heat gain from the sun with blinds or curtains.
	Unit has not been running long enough.	It takes time to cool a room due to the heat retain in the fabric of the room.
	Filter is blocked or dirty.	Clean the filter and make sure there is enough space around the unit and that the air inlet is not blocked by a wall, furniture or curtains.
Heating is not effective	Room size is too large.	Check whether the air coming out is warm.
Machine turns itself off	The set point has been reached.	Either accept that the target has been reached or select a new set point so that the unit will run for longer.
Machine leaks water when moved	Internal water container is full.	Always drain the unit of water before moving it (see page 12).
Display shows 'Ft'	Internal water container is full.	Please see page 12.
E0	Display board error.	Please contact Meaco.
E1	Temperature sensor is faulty.	Please contact Meaco.
E2	Evaporator coil sensor is faulty.	Please contact Meaco.

If you need to contact Meaco, please use the contact details below.

Contact Number: **01483 234900**
 Contact Email: customerservice@meaco.com / service@meaco.com
 Live Chat: www.meaco.com

WARRANTY AND CUSTOMER SERVICE

There is a two-year warranty on your portable air conditioner from the date of purchase. Your terms of sales are as per your contract with Costco, please refer to Costco for further details. If there is a problem with your portable air conditioner during this time frame, contact Meaco for advice or contact Costco directly. Please keep hold of your receipt from Costco should the portable air conditioner develop a fault.

This portable air conditioner has been imported into the UK by:

*Meaco (U.K.) Limited
Meaco House
Parklands
Railton Road
Guildford
GU2 9JX*

*Telephone: 01483234900
Email: service@meaco.com
Website: www.meaco.com*

Please record, for future reference, your date of purchase here.

Date of purchase:

Suppliers name: **COSTCO**



This marking indicates that this product should not be disposed with other household wastes throughout the EU. To prevent possible harm to the environment or human health from uncontrolled waste disposal, recycle it responsibly to promote the sustainable reuse of material resources. To return your used device, please use the return and collection systems or contact the retailer where the product was purchased. They can take this product for environmental safe recycling.

